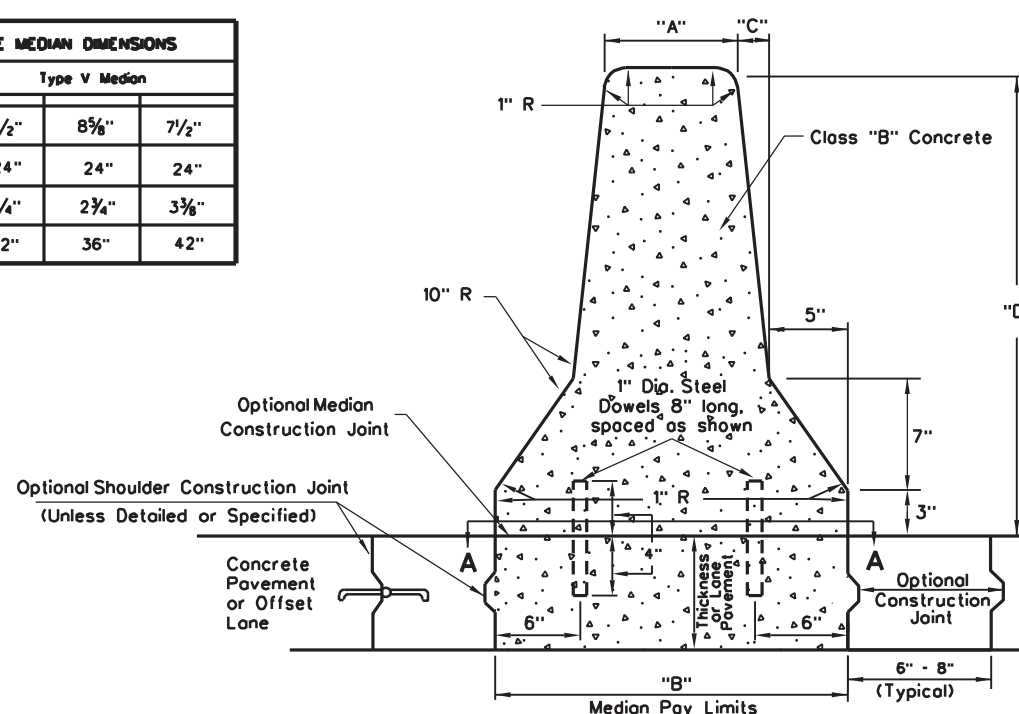


(Adjacent to Bituminous Paving)

F-SHAPE MEDIAN DIMENSIONS			
Designation	Type V Median		
"A"	9 1/2"	8 5/8"	7 1/2"
"B"	24"	24"	24"
"C"	2 1/4"	2 3/4"	3 3/8"
"D"	32"	36"	42"



(Adjacent to Concrete Paving)

## F-SHAPE

## NOTES

The median and footer can be poured monolithically. When the median is poured on existing concrete pavement, the median shall be secured with dowelbars drilled and grouted in the existing concrete pavement, as shown. When the median and footer are to be poured separately, a median construction joint shall be used.

Where the median is placed over existing pavement contraction joints, median sections shall be separated by open joints having the same width as the pavement joints for the full median height. At all other median contraction joints, a 3/8" wide and 2" deep groove shall be sawed or formed across the top and along the sides for the entire height (including footer depth) of the median, or a full depth butt joint shall be formed at approximately 15' - 20' intervals along the length of the median. In addition these grooved or butt joints shall transversely align within a plus or minus one-foot tolerance with the contraction joints in abutting concrete pavement.

Expansion joints shall be placed in the median at structures when so indicated, opposite expansion joints in abutting concrete pavement, over existing expansion joints in underlying concrete pavement, and at other locations as shown on the Plans or directed by the Engineer. At expansion joints, median sections shall be 3/4" apart and the opening filled for the entire depth of the median with 3/4" preformed joint filler which complies with the requirements of section 610 of the Standard Specifications Roadways and Bridges. The filler shall be recessed 1/4" in from the sides and the top of the median and the completed joint shall receive no further treatment; e.g., sealing with a waterproof sealer is prohibited. The median shall be adequately terminated at each end of median installations as shown or specified elsewhere in the Plans.

Drainage openings shall be provided in the medians where indicated on the Plans or directed by the Engineer.

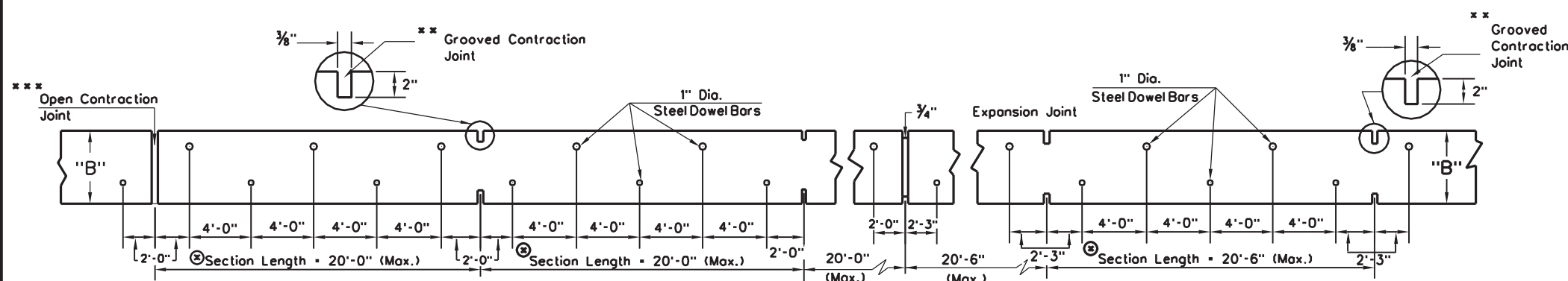
Unless otherwise specified, bi-directional delineators meeting the requirements of Section 661 of the Standard Specifications Roads and Bridges and mounted on suitable supports, shall be secured to, and spaced along the length of the median as shown and specified on Standard Sheet TE 11-5 of the Standard Details Book, Volume II. The cost of concrete, steel dowel bars, preformed joint filler, delineators and delineator mountings shall be included in the cost of the median.

Type of surface adjacent to the median, whether normal width or widened pavement, offset lane, median shoulder, etc., shall be specified in the Plans and shall not be included in the cost of the median but shall be paid for separately.

The contractor shall have the option to install either the N-J Shape or the F-Shape median unless otherwise specified in the Plans.

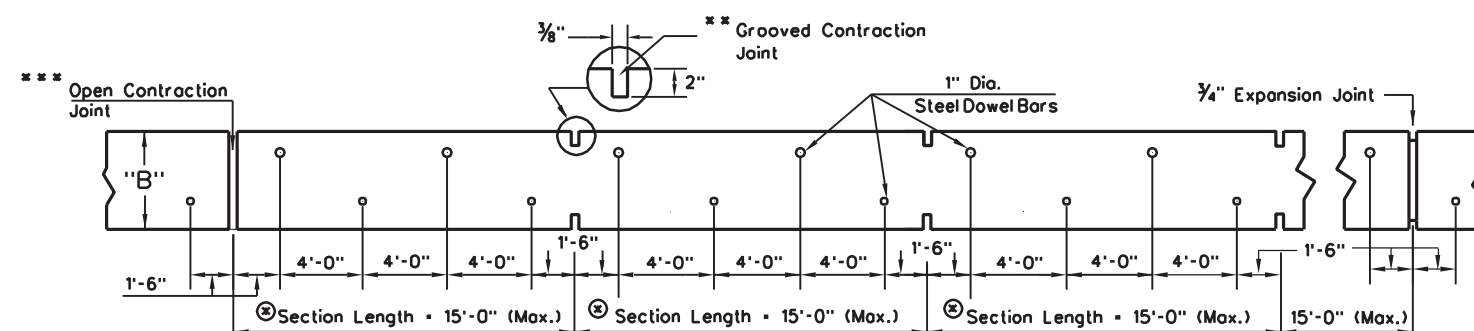
For additional dimensions, notes and details see sheet 2 and 3.

\* Standard Detail GR 12 dated 7-1-99 shall not be used on WVDOH Projects let after 12-31-2017.



SECTION A-A (39'-4" Joint Spacing)

SECTION A-A (60'-8" Joint Spacing)



SECTION A-A (15' Joint Spacing)

⊙ center-to-center of Contraction Joints, except where Expansion Joints are Specified.

\*\* formed full-depth butt joint.

\*\*\* open (separated) joint over existing ridged pavement contraction joint. Median joint width equal to pavement joint width.

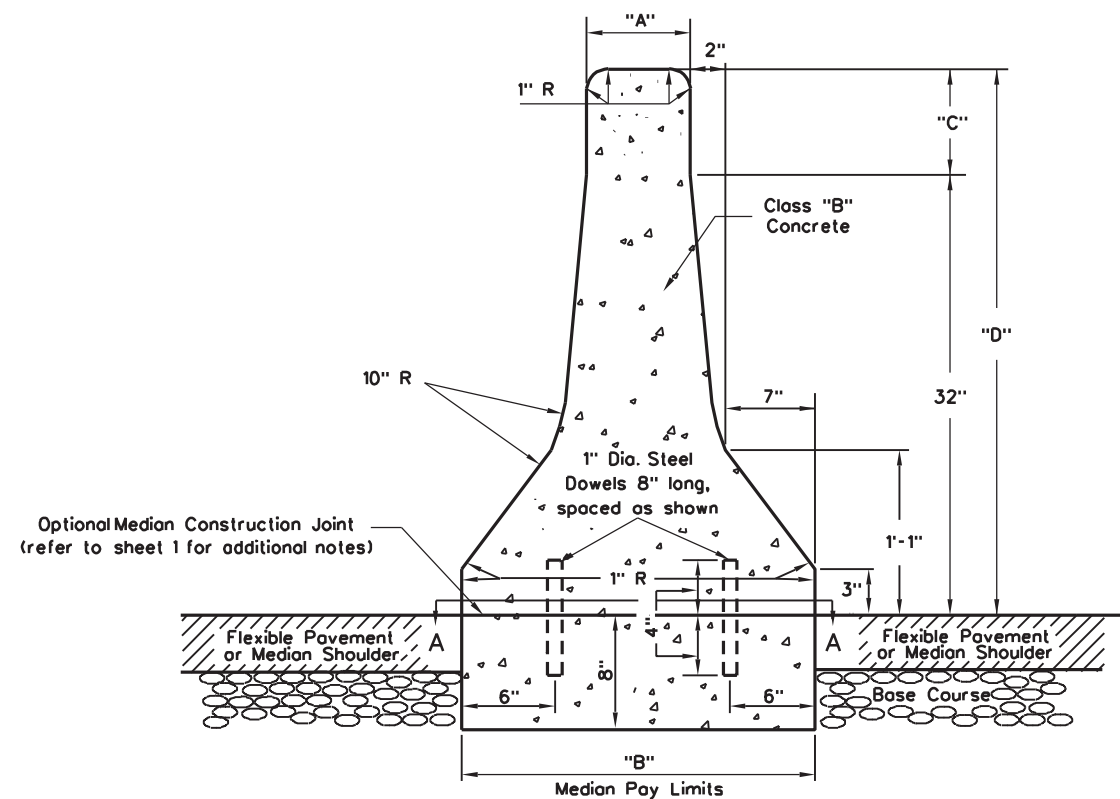
WEST VIRGINIA DEPARTMENT OF TRANSPORTATION  
DIVISION OF HIGHWAYS  
STANDARD DETAIL

PREPARED 7-1-99  
REVISION DATE  
12-18-2017

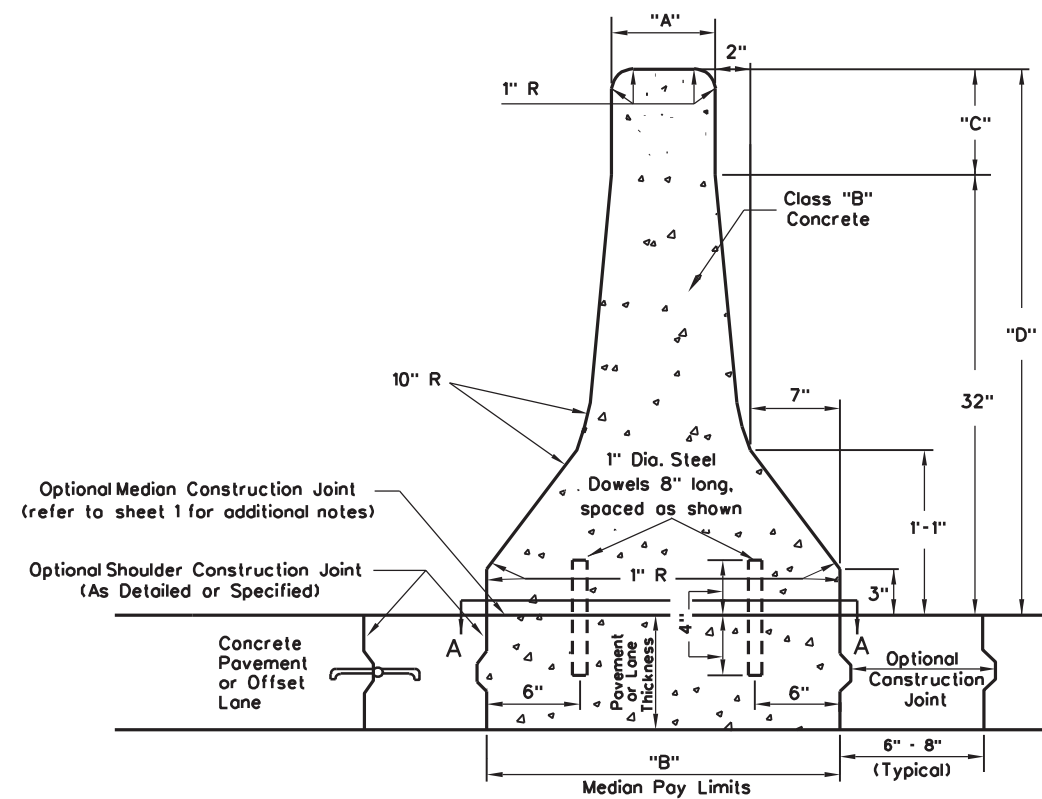
TYPE V MEDIAN  
F-SHAPE

(Sheet 1 of 4)

STANDARD SHEET GR12

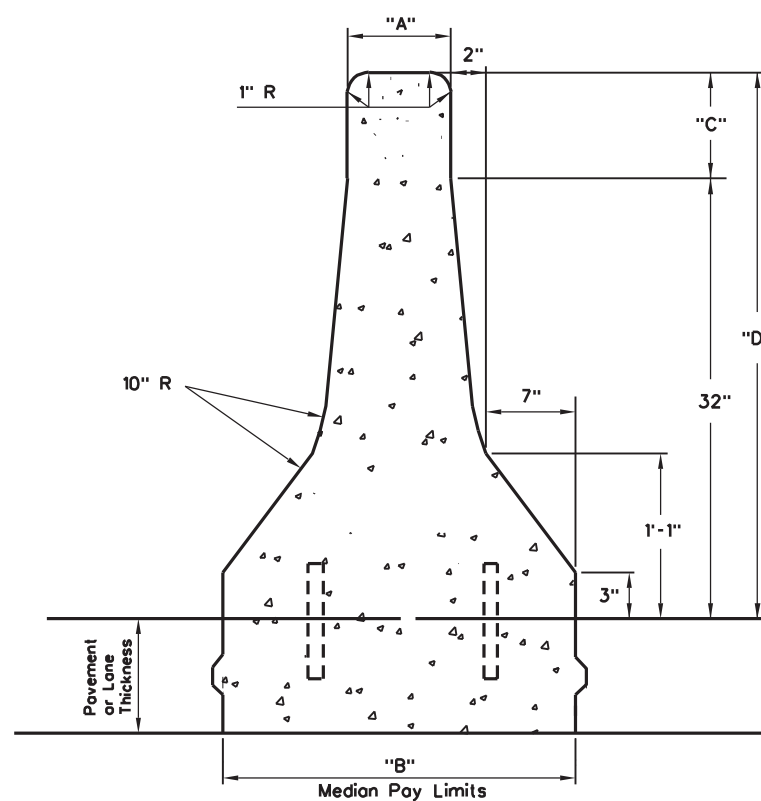


(Adjacent to Bituminous Paving)



(Adjacent to Concrete Paving)

## N-J SHAPE



Raised Median

N-J SHAPE MEDIAN DIMENSIONS			
Designation	Type V Median		
"A"	6"	6"	6"
"B"	24"	24"	24"
"C"	-0-	4"	10"
"D"	32"	36"	42"

## NOTES

Height of the median, dimension "D", shall be included in the Plans.

Additional height of median, dimension "C" shall be vertical.

The contractor shall have the option to install either the N-J Shape or the F-Shape median unless otherwise specified in the Plans.

For additional dimensions, notes and details, see Sheet 1 and 3.

\* Standard Detail GR 12 dated 7-1-99 shall not be used on WVDOH Projects let after 12-31-2017.

WEST VIRGINIA DEPARTMENT OF TRANSPORTATION  
DIVISION OF HIGHWAYS  
STANDARD DETAIL

PREPARED 7-1-99  
REVISION DATE  
12-18-2017

TYPE V MEDIAN  
N-J SHAPE

(Sheet 2 of 4)

STANDARD SHEET GR12



## DOUBLE FACE TRANSITION



## DOUBLE MEDIAN TRANSITION

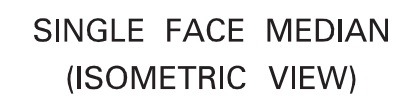
## NOTES

Elongated bolt holes do not apply to existing end posts that are not being reconstructed.

\* Standard Detail GR 12 with revision date 11-13-12 shall not be used on WVDOT Projects let after 12-31-2017.



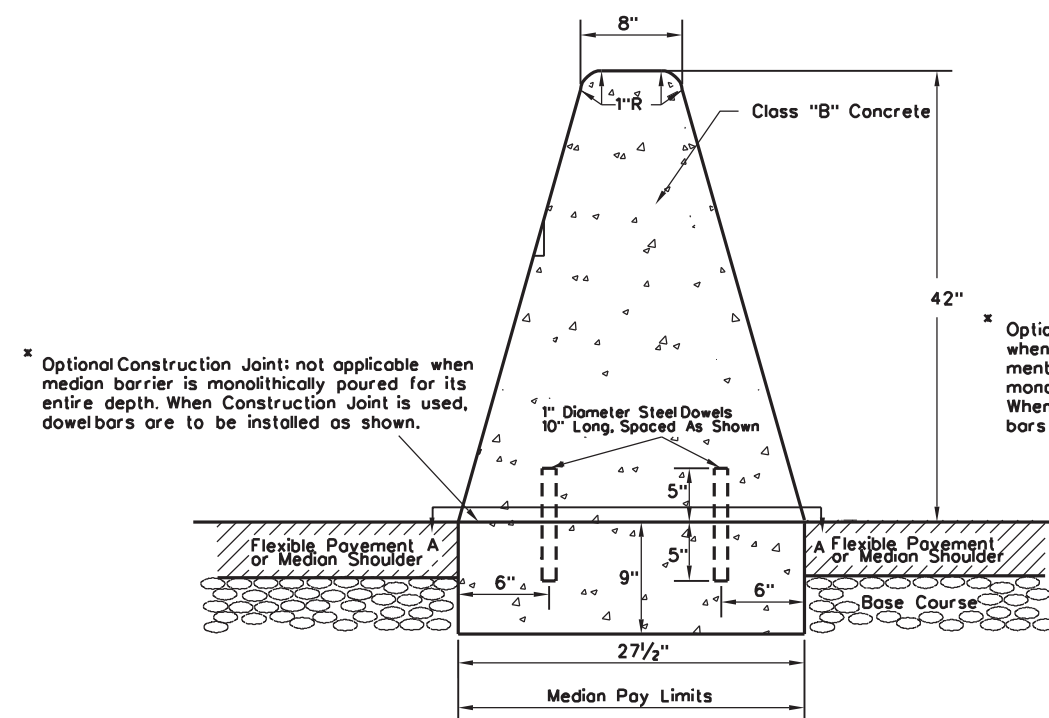
## SINGLE FACE TRANSITION



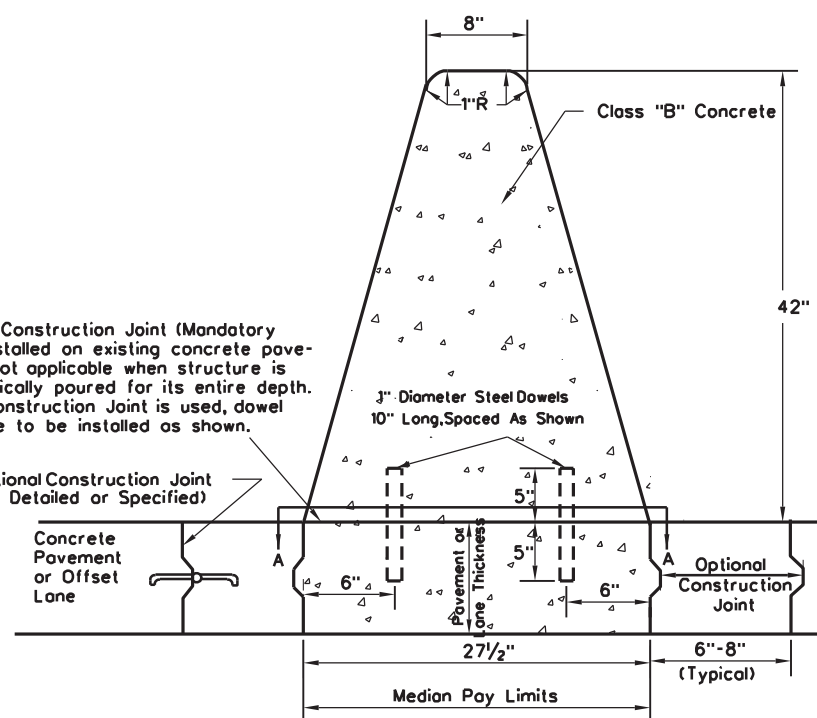

**WEST VIRGINIA DEPARTMENT OF TRANSPORTATION  
DIVISION OF HIGHWAYS**

# TYPE V MEDIAN GUARDRAIL ATTACHMENT F-SHAPE OR N-J SHAPE (Sheet 3 of 4)

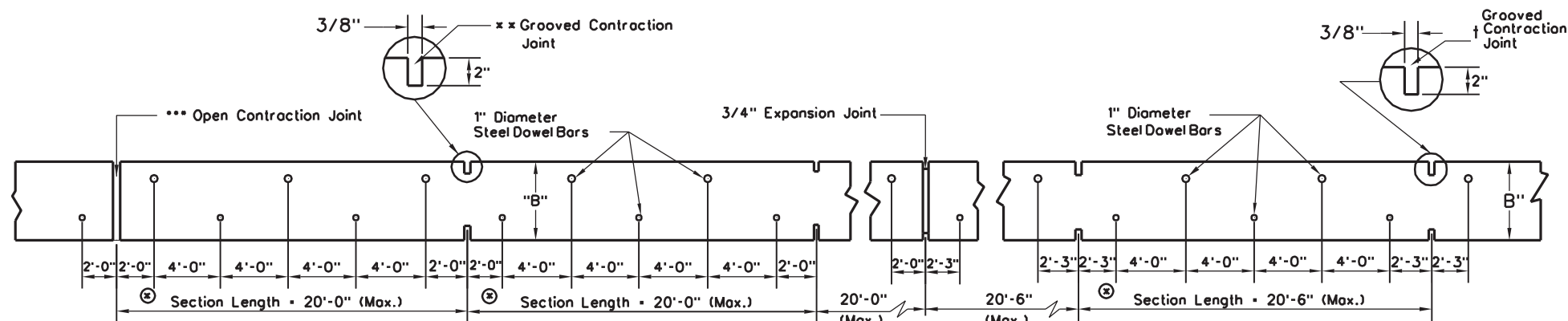
STANDARD SHEET GR12



**TYPE VII MEDIAN  
SINGLE SLOPE CONCRETE BARRIER  
(Adjacent to Bituminous Paving)**

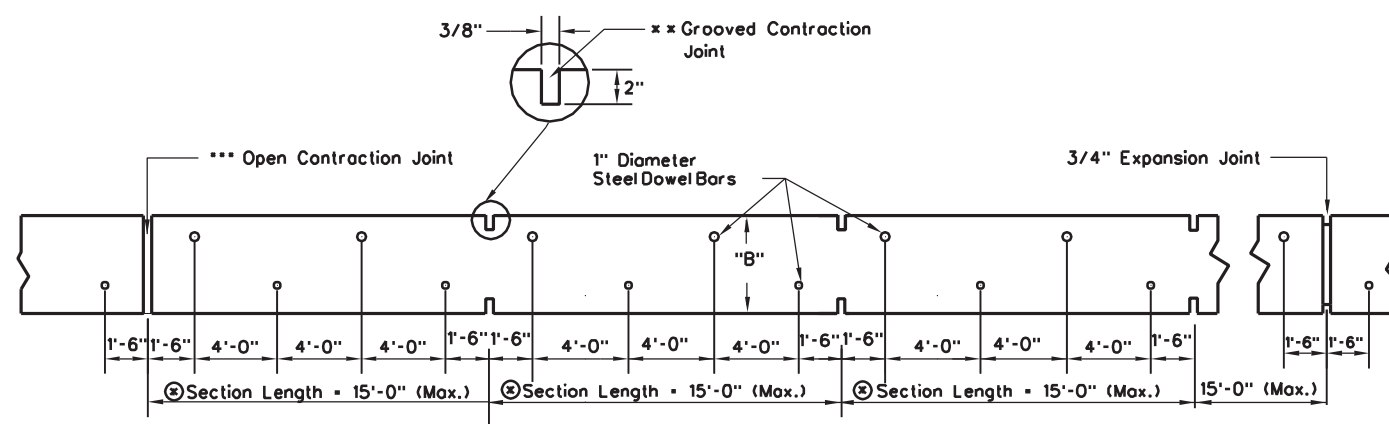


**TYPE VII MEDIAN  
SINGLE SLOPE CONCRETE BARRIER  
(Adjacent to Concrete Paving)**



**SECTION A-A (40' Joint Spacing )**

**SECTION A-A (61'-6" Joint Spacing )**



**SECTION A-A (15' Joint Spacing )**

⊕ Center to Center of Contraction Joints, except where Expansion Joints are Specified.

† or a formed full-depth butt joint. Also, 1/4" open (separated) joint over existing pavement contraction joint.

\*\* or a formed full-depth butt joint.

\*\*\* open (separated) joint over existing rigid pavement contraction joint, with median joint width equal to pavement joint width.

## NOTES

Cast-in-place concrete barrier medians shall be constructed in sections as shown herein and shall be constructed in accordance with the applicable provisions of Section 610 of the Specifications.

At barrier median contraction joints over existing pavement contraction joints, median sections shall be separated by open joints, having the same width as the pavement joints, for the full exposed depth of the median. At all other barrier median contraction joints, a groove, 3/8" wide and 2" deep, shall be sawed or formed across the top and along the sides for the entire depth of the median or a full depth butt joint shall be formed, at approximately 15'-20' intervals along the length of the median. In addition, these grooved or butt joints shall transversely align, within a plus or minus one-foot tolerance, with the contraction joints in abutting concrete pavement.

Expansion joints shall be placed in the barrier median at structures when so indicated, opposite expansion joints in abutting concrete pavement, over existing expansion joints in underlying concrete pavement, and at other locations as shown on the Plans or directed by the Engineer. At expansion joints, barrier median sections shall be 3/4" apart and the opening filled, for the entire depth of the median, with 3/4" preformed joint filler which complies with the requirements of section 610 of the Specifications. The filler shall be recessed 1/4" in from the sides and the top of the median and the completed joint shall receive no further treatment; e.g., sealing with a waterproof sealer is prohibited.

The finished surface of the barrier median shall be smooth, dense, unpitted and free from air bubble pockets, depressions, and honeycomb. If deemed necessary by the Engineer, the above mentioned finished surface will be obtained by the use of water and a wood block or Carborundum brick.

At each end of barrier median installations, the median shall be adequately terminated as shown or specified elsewhere in the Project Plans.

Drainage openings shall be provided in the barrier medians where indicated on the Plans or directed by the Engineer.

Unless otherwise specified, bi-directional delineators, meeting the requirements of 661 of the Specifications and mounted on suitable supports, shall be secured to, and spaced along the length of, the barrier median as shown and specified on Standard Sheet TE 11-5 of the Standard Details Book, Volume II.

The cost of median concrete, steel dowel bars, preformed joint filler, delineators and delineator mountings shall be included in the cost of the median.

Type of surface adjacent to the barrier median, whether normal width or widened pavement, offset lane, median shoulder, etc., shall be specified in the Plans and shall not be included in the cost of barrier median but shall be paid for separately.

\* Standard Detail GR 12 dated 7-1-99 shall not be used on WVDOH Projects let after 12-31-2017.

WEST VIRGINIA DEPARTMENT OF TRANSPORTATION  
DIVISION OF HIGHWAYS  
STANDARD DETAIL

PREPARED 7-1-99

REVISION DATE  
12-18-2017

**TYPE VII MEDIAN**

(Sheet 4 of 4)

STANDARD SHEET GR12